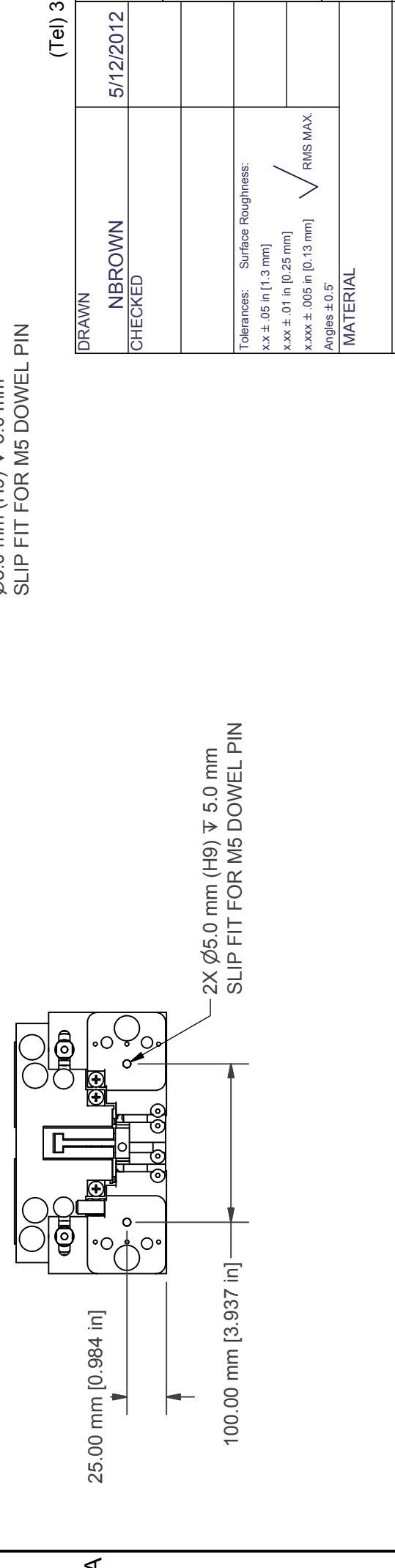
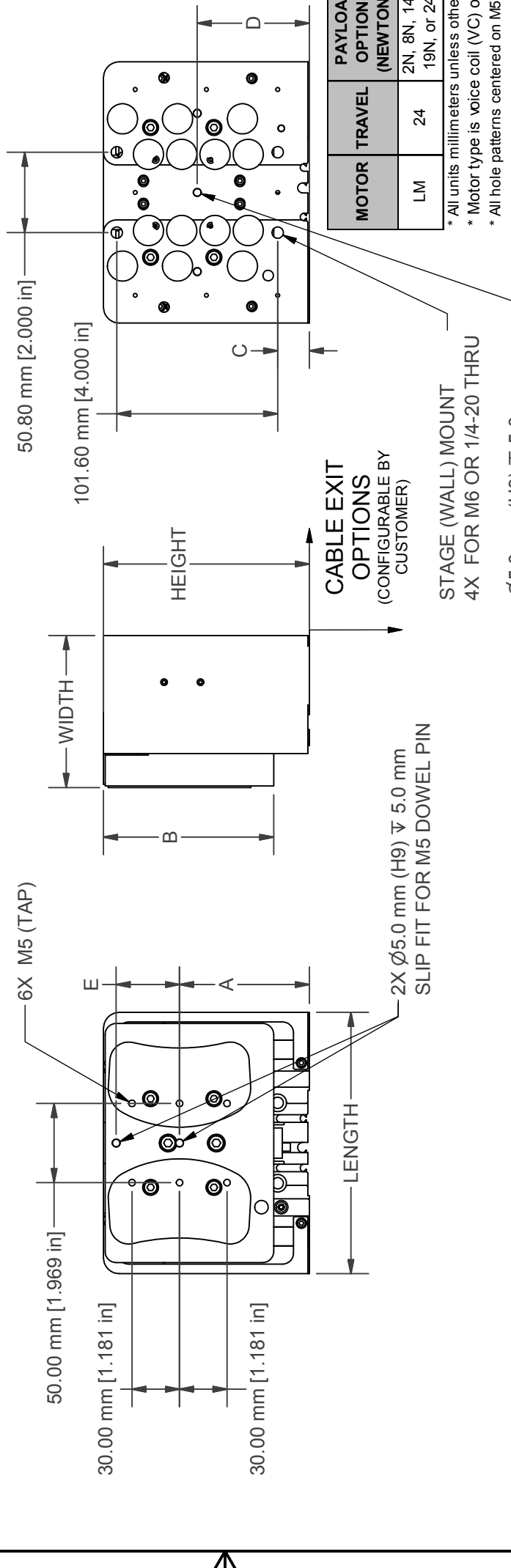
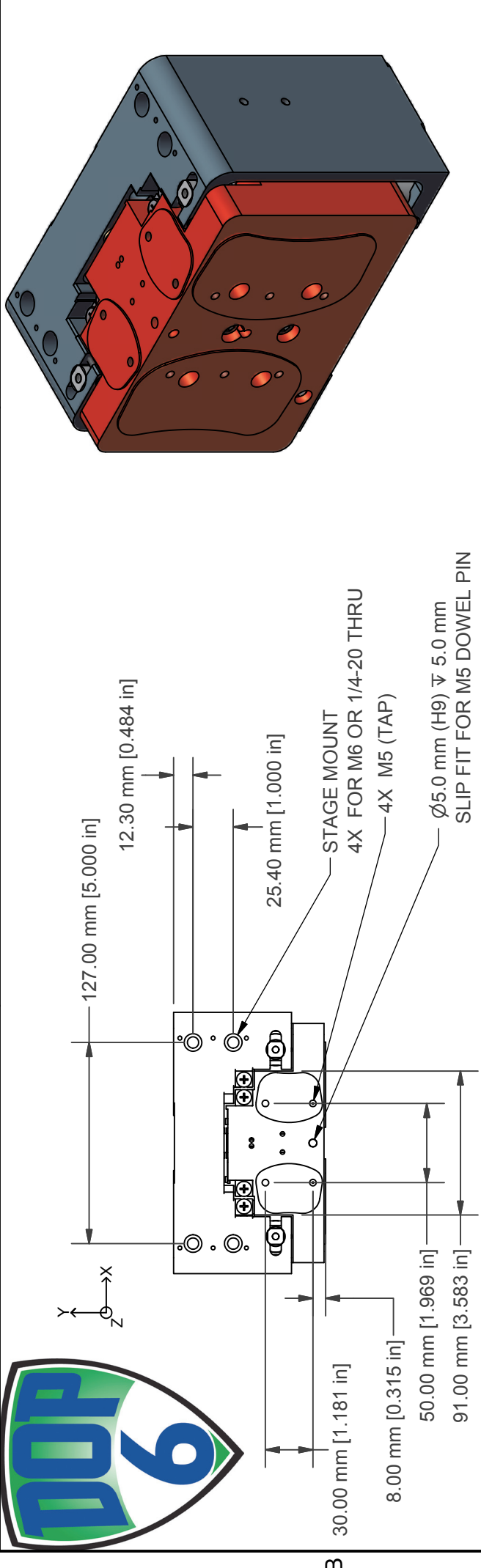


STANDARD FEATURES

Stage	Z Stage
Travel	24 mm
Motor	Voice Coil or Ironless Core Linear Motor
Feedback	Non-Contact Optical Encoder
Scale	Gold Tape Scale Optional: Near Zero CTE ZeroMet
Resolution	1Vp-p Analog Output (5nm with 4096 Interpolation) Digital Output Options: 5um, 1um, 0.5um, 0.2um, 100nm, 50nm, 20nm**, 10nm**, and 5nm** (* Reduced Speeds Apply)
Sensors	Integrated Home and End of Travel Limits
Bearings	High Precision Crossed Roller Bearings
Counterbalance	Non-Contact Magnetic Spring (Constant Force)
Payload	0 to 2.0+ kg
Cables	High Flex, 10M Cycle, 3m Length
Structure	Anodized Aluminum 6061-T6 Optional: Stainless Steel
Environment	Standard Optional: Clean Room and Vacuum (10-6 Torr)
Temperature	0°C to 50°C
Humidity	10% to 80% Non-Condensing
Precision	6-D Nano Precision™ Test Methods



MOTOR	TRAVEL	PAYLOAD OPTIONS (NEWTONS)	ORIENTATION	LENGTH	WIDTH	HEIGHT	A	B	C	D	E
LM	24	2N, 8N, 14N, 19N, or 24N	(blank) = Upright "INV" = Inverted	165	96	130	82	107.5	20	70.8	40

* All units millimeters unless otherwise noted. Force units are Newtons.
 * Motor type is voice coil (VC) or linear brushless motor (LM) designator in model number.
 * All hole patterns centered on M5 dowel pin hole at center of stage (if not otherwise indicated).

ALIO INDUSTRIES PROPRIETARY INFORMATION
 (Tel) 303.339.7500 - SALES@ALIOINDUSTRIES.COM - WWW.ALIOINDUSTRIES.COM

ALIO 6-D

TITLE
**AI-(MOTOR)-(TRAVEL)00-
 (PAYLOAD)-Z-MCB-(ORIENTATION)**

DRAWN	NBROWN	5/12/2012
CHECKED		
Tolerances: Surface Roughness: x.x ± .05 in [1.3 mm] x.xx ± .01 in [0.25 mm] x.xxx ± .005 in [0.13 mm] Angles ± 0.5°		
MATERIAL		
SIZE	DWG NO	REV
B	0010-08039	002
FINISH	SEE NOTES	SCALE
		ALIO STD TEMPLATE - REV 006
		SHEET 1 OF 1

NOTE: MODEL AI-LM-2400-8N-Z-MCB SHOWN.