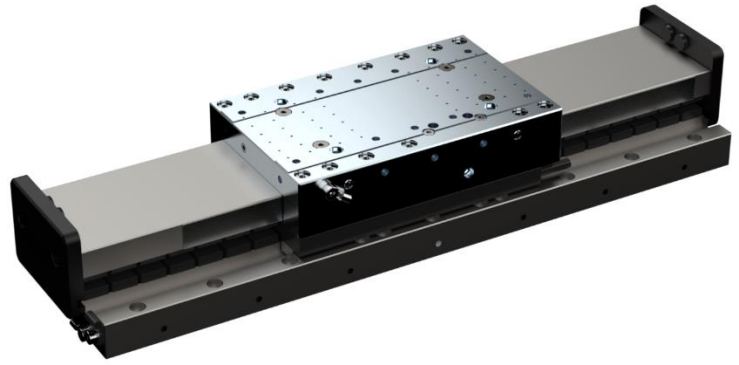


## Key Features

- Slide 150 x 99 mm (l x w)
- Payload up to 15 kg
- Absolute Measuring System
- Dynamic Linear Motor
- High Positioning Accuracy
- Compact Design
- Stackable



## Air-Bearing Linear Axis

### Concept and Design

Compact design, high load capacity and very high positioning accuracy are the outstanding features of the linear axis EZ-2352-094.

The air bearing axis is designed for small to medium strokes with loads up to 150 N. The slide made of hard-coated aluminum is dynamically driven by an ironless synchronous motor (Tecnotion UM6). The preload is achieved by magnet assemblies. In the standard version, the axis is equipped with an absolute measuring system from Heidenhain (LIC411).

The chrome steel rail is available in 3 standard lengths, different lengths on request. For the realization of simple cross tables, two axes can be stacked on top of each other.

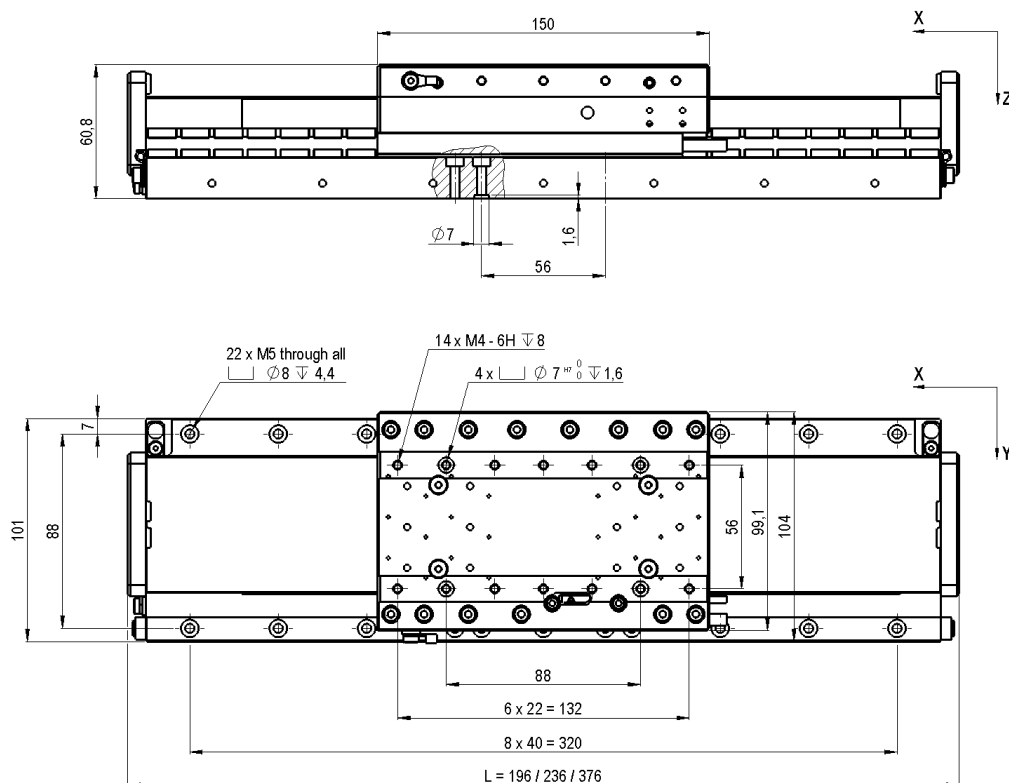
### Applications

Electronics manufacturing, PCB manufacturing, inspection technology, non-contact 2D measurement, sensor and camera positioning for inspection, AOI (automatic optical inspection), automation processes. In general: applications with high demands on dynamics, precision, repeatability, smooth scan movements, short settling times.

### Drive Control

We offer the linear axis EZ-2352-094 with the following drive controllers:

- Kollmorgen Servostar AKD / S300 / S700
- ACS controller with UDMpa Drive
- Triamec TSD130



## Specifications

Type	Unit	Stroke 20	Stroke 60	Stroke 200	
Stroke	mm	20	60	200	
Positioning Accuracy	µm	2	2	3	
Repeatability (bidirectional) <sup>1)</sup>	nm	50	50	50	
Position Stability <sup>1)</sup>	nm	30-100	30-100	30-100	
Vertical/Horiz. Straightness (XTZ/XTY)	µm	1	2	3	
Pitch (XRY)	µrad	5	10	25	
Yaw (XRZ)	µrad	5	10	25	
Max. Speed unloaded	m/s	2	2	2	
Max. Acceleration unloaded	m/s <sup>2</sup>	20	20	20	
Mechanical Data		Unit	Stroke 20	Stroke 60	Stroke 200
Mounting Position			unrestricted	unrestricted	unrestricted
Dimension LxWxH		mm	196 x 104 x 60,3	236 x 104 x 60,3	376 x 104 x 60,8
Max. Load <sup>2)</sup>		kg	15	15	15
Load Capacity vertical (Z) push/pull		N	1,200/800	1,200/800	1,200/800
Load Capacity lateral (Y)		N	170	170	170
Moment of Tilt around Y		Nm	22	22	20
Moment of Tilt around X		Nm	7	7	6
Moment of Tilt around Z		Nm	5	5	5
Moving Mass (slide)		kg	1.3	1.3	1.3
Total Mass (incl. slide)		kg	5	7	10
Encoder			EZ-2352-94-xxx		
Type			absolute		
Signal			EnDat2.2		
Drive		Unit	EZ-2352-94-xxx		
Type			synchronous, ironless		
Intermediate Circuit Supply		V <sub>AC</sub>	3-phase up to 45 (60 V <sub>DC</sub> )		
Continuous Force		N	45		
Peak Force		N	160		
Constant Current		A <sub>rms</sub>	1.2		
Peak Current		A <sub>rms</sub>	8		
Cable Length		m	1		
Interfaces and Environment		Unit	EZ-2352-94-xxx		
Air Consumption		Sl/min	12		
Supply Pressure		bar	5		
MTBF		h	> 20,000		
Limit Switch			optional <sup>3)</sup>		
Clean Room Suitability			applicable		
Drive Control			EZ-2352-94-xxx		
Standard			Kollmorgen Servostar AKD / S300 / S700		
High End			ACS Controller, Triamec		

1) depending on drive control

2) large mass moments of inertia must be taken into account

3) type: Baumer IFFM 08P37A6/L (PNP normally closed)

Subject to technical modifications and typographical errors.